

0019 - Dong Quai/Angelica for Ligustilide by GC

Botanical Name: *Angelica sinensis*

Common Names: Dong Quai, Female Ginseng, Chinese angelica

Plant Description:

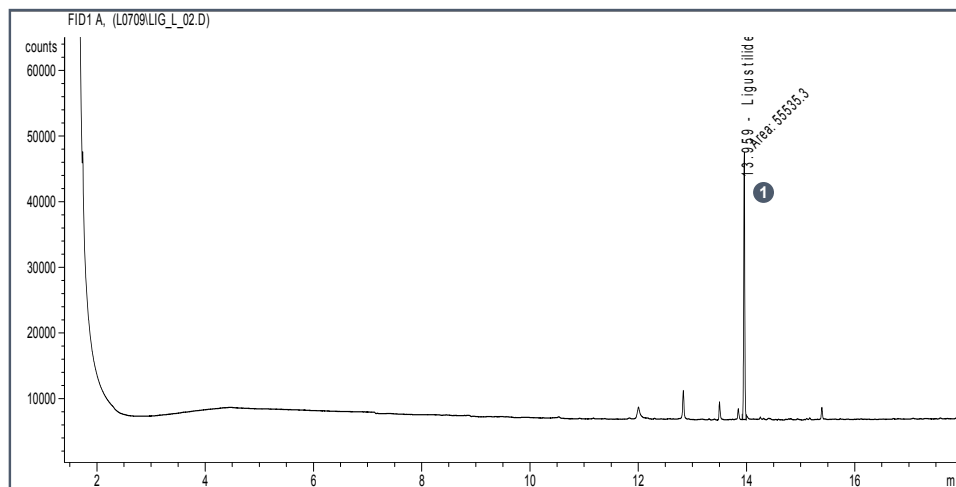
Native to China and Japan, *Angelica sinensis* is a biennial and perennial plant, commonly found in well watered mountain ravines, riverbanks and damp meadows. It requires deep moist fertile soil in light shade or in direct sun. The root has a sweet pungent aroma and is often used in cooking or in tonics. Its stem is round, grooved, hollow fluted and tinged with blue or purple and can grow between 1-3m. It has greenish-white flowers which bloom from May to August. The leaves of the Dong Quai plant resemble those of carrots, celery, or parsley.



Therapeutic Use Overview:

Touted as the “female ginseng”, *Angelica sinensis* has been used to treat many menstrual irregularities. Believed to stimulate the central nervous system, Dong Quai’s constituents have also been purported to help with internal bleeding and endometriosis, as well as remedy weakness and headaches associated with menstrual disorders. The phytoestrogens present in the extracts sensitize the estrogen binding and absorption sites increasing the levels of estrogen in the body. Dong Quai can also help relieve some symptoms of swollen prostates in men.

Representative HPLC Analysis: Mixed Standard Solution

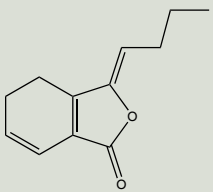


Instrument Parameters			
Column:	ZB-5 Column, 30.0 m x 0.32 mm x 0.25 μm		
Detection:	FID		
Flow Rate:	2.0 mL/minute		
Injection Volume:	1.0 μL		
Temperature:	40 °C		
Carrier Gas:	Helium		
Oven Temp Program			
Level	Rate (°C/min)	Temp (°C)	Time (min)
0	N/A	40	3.0
1	15.0	340	7.0

Analytes:

- 1 Z-Ligustilide

Phytochemical Reference Standards

Product Description And Details	Product ID	Qty
 <p>LIGUSTILIDE, Z- (IN ACETONITRILE) Grade: AHP CAS#: [81944-09-4] Chemical Formula: C₁₂H₁₄O₂ FW: 190.24</p>	ASB-00012180-005	5mg
	ASB-00012180-010	10mg
	ASB-00012180-025	25mg
	ASB-00012180-100	100mg

Reference Standard Kits

Product Name	Contents	Product ID	Qty
DONG QUAI(Dang Gui) AHP HPLC ANALYSIS KIT	AHP DANG GUI(ANGELICA) MONOGRAPH LIGUSTILIDE, Z-(IN ACETONITRILE)(10.2mg/mL) (AHP) ZEBRON ZB-5 30m, 0.32mmID, 0.25um	KIT-00004994-0HK KIT-00019545-010	1 Kit

Botanical Reference Materials

Product Description	Grade	Product ID	Qty
DONG QUAI (ANGELICA SINENSIS) ROOT	VBRM	ASB-00030630-005	5g
DONG QUAI (ANGELICA SINENSIS) ROOT	XRM	ASB-00036120-005	5g
DONG QUAI (ANGELICA SINENSIS) ROOT	VRM	ASB-00036121-005	5g

Monographs

Product Description	Product ID	Qty
AHP DANG GUI(ANGELICA) MONOGRAPH	ASB-00040105-00B	1 book

Additional Related Compounds

Product Description And Details	Product ID	Qty
CAFFEIC ACID Grade: AHP CAS#: [331-39-5] Chemical Formula: C ₉ H ₈ O ₄ FW: 180.16	ASB-00003024-005 ASB-00003024-010 ASB-00003024-025 ASB-00003024-100	5mg 10mg 25mg 100mg
CHLOROGENIC ACID Grade: AHP CAS#: [327-97-9] Chemical Formula: C ₁₆ H ₁₈ O ₉ FW: 354.31	ASB-00003450-005 ASB-00003450-010 ASB-00003450-025 ASB-00003450-050	5mg 10mg 25mg 50mg
FERULIC ACID, trans- Grade: P CAS#: [537-98-4] Chemical Formula: C ₁₀ H ₁₀ O ₄ FW: 194.18	ASB-00006005-005 ASB-00006005-010 ASB-00006005-025 ASB-00006005-100	5mg 10mg 25mg 100mg
ISOFERULIC ACID Grade: P CAS#: [537-73-5] Chemical Formula: C ₁₀ H ₁₀ O ₄ FW: 194.19	ASB-00009251-025 ASB-00009251-100	25mg 100mg
OSTHOLE Grade: P CAS#: [484-12-8] Chemical Formula: C ₁₅ H ₁₆ O ₃ FW: 244.29	ASB-00015420-005 ASB-00015420-010 ASB-00015420-025	10mg 25mg 50mg
PSORALEN Grade: SH CAS#: [66-97-7] Chemical Formula: C ₁₁ H ₆ O ₃ FW: 186.17	ASB-00016365-005 ASB-00016365-010 ASB-00016365-025	5mg 10mg 25mg
QUERCETIN Grade: AHP CAS#: [117-39-5] Chemical Formula: C ₁₅ H ₁₀ O ₇ FW: 302.24	ASB-00017030-005 ASB-00017030-010 ASB-00017030-025	5mg 10mg 25mg
SEDANOLIDE Grade: SH CAS#: [6415-59-4] Chemical Formula: C ₁₂ H ₁₈ O ₂ FW: 194.27	ASB-00019110-005 ASB-00019110-010	5mg 10mg